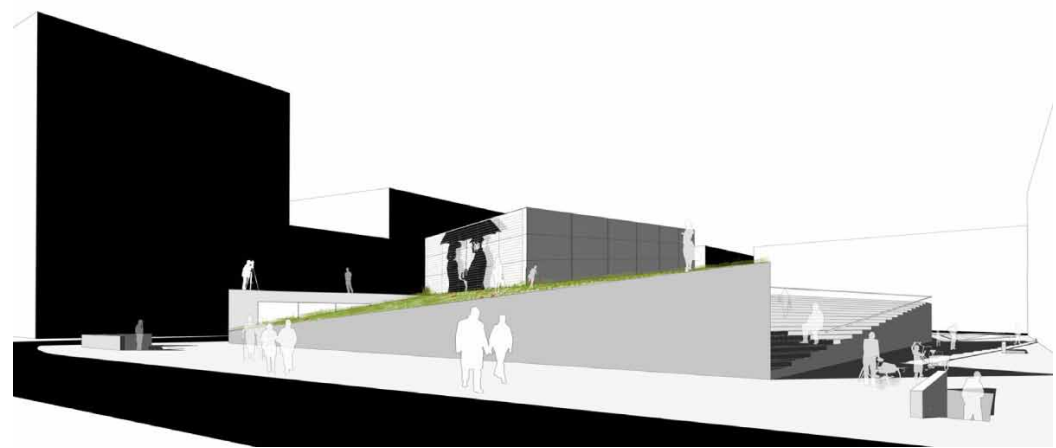


israel hurtado cola [Architect]

<< graphic portfolio



Israel Hurtado Cola
RIBA Part III
ARB Registered Architect
Reg. No. 079162H

e: israel@elpiso.net
www: elpiso.net/room6
a: 6 Cavendish Mansions
Clapton Square
E5 8HR, London UK
m: +44 (0)7504919295

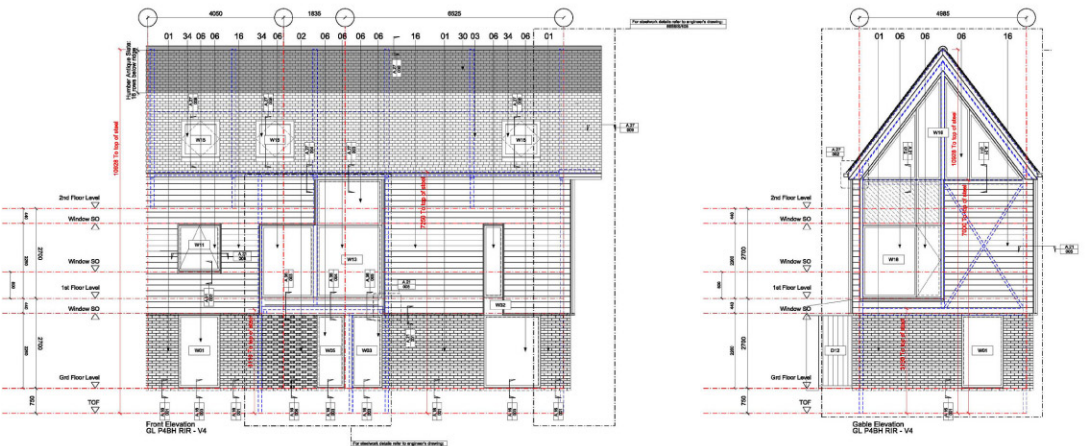
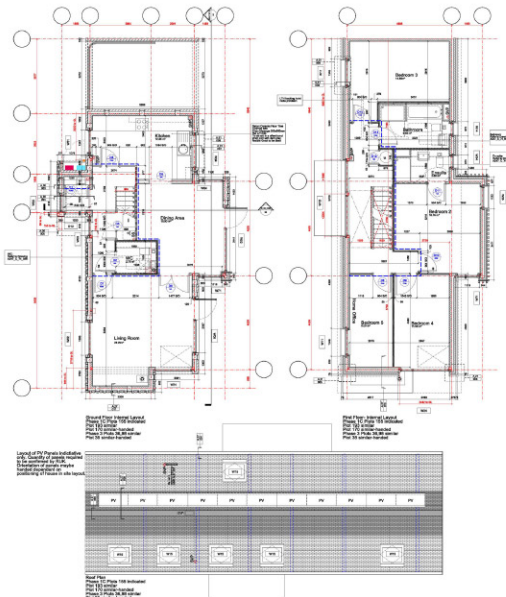
[K10-K13] >> CLAY FARM

[Proctor & Matthews Architects]

>> Great Kneighton - Clay Farm (oct2010-may2013)

>> Project Winner at Housing Design Awards 2012
 New build private & affordable housing scheme
 +400 dwellings.

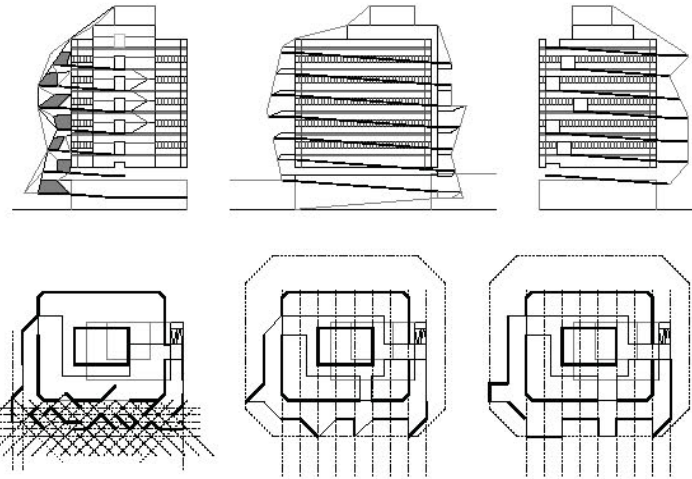
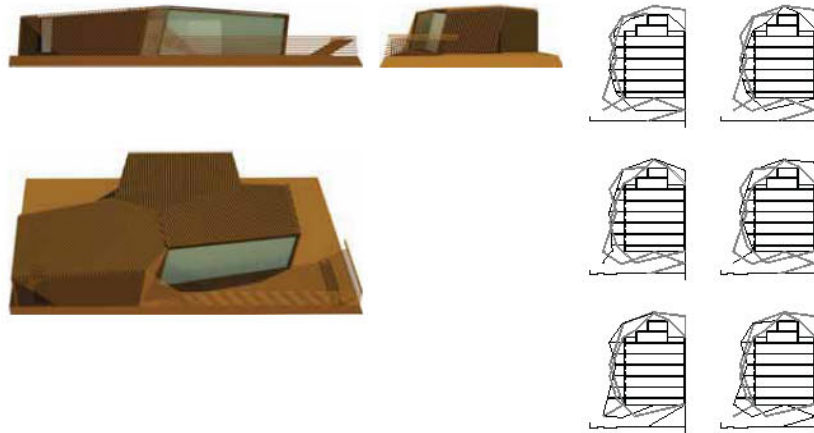
CSH-5, Lifetime Homes, Housing Quality Indicators.
 Feasibility study, design development,
 planning application, detailing
 Construction documents
 RIBA stages A-L



[K10] >> ST+R

tasks developed

...Collaboration in several Architectonic Projects -mainly Residential- in different stages: Competitions; First Design stage and development of new material and presentations to meet the clients; production of Applications and Design-and-Access-Statements in order to obtain Building Licenses; Detailing and further Definition, as well as Material and Products Research.



>> von Strempel & Riebel Architects (London)



View from South-West

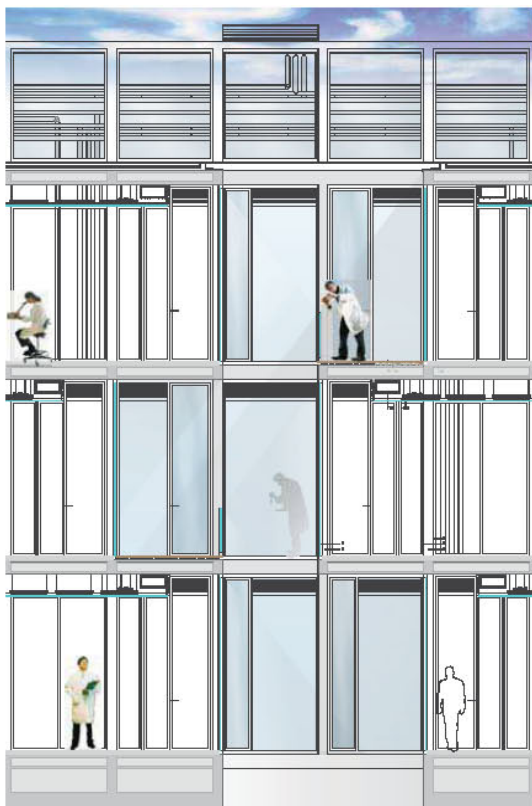
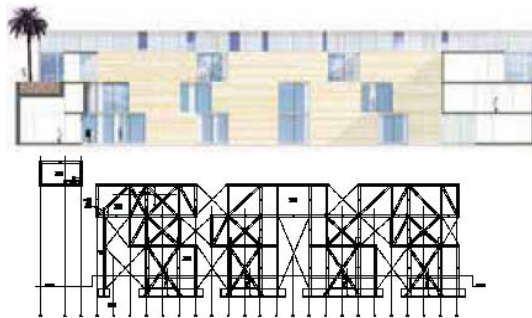
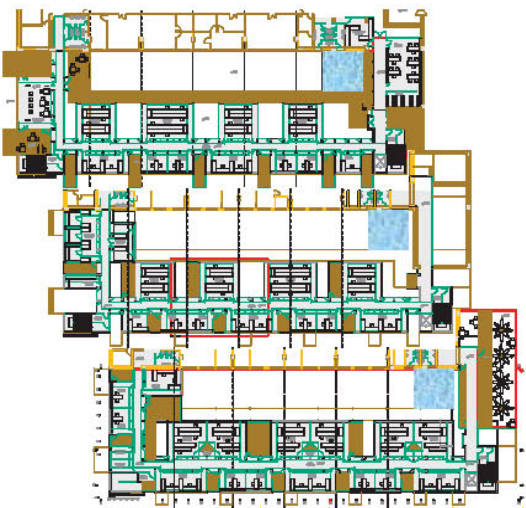
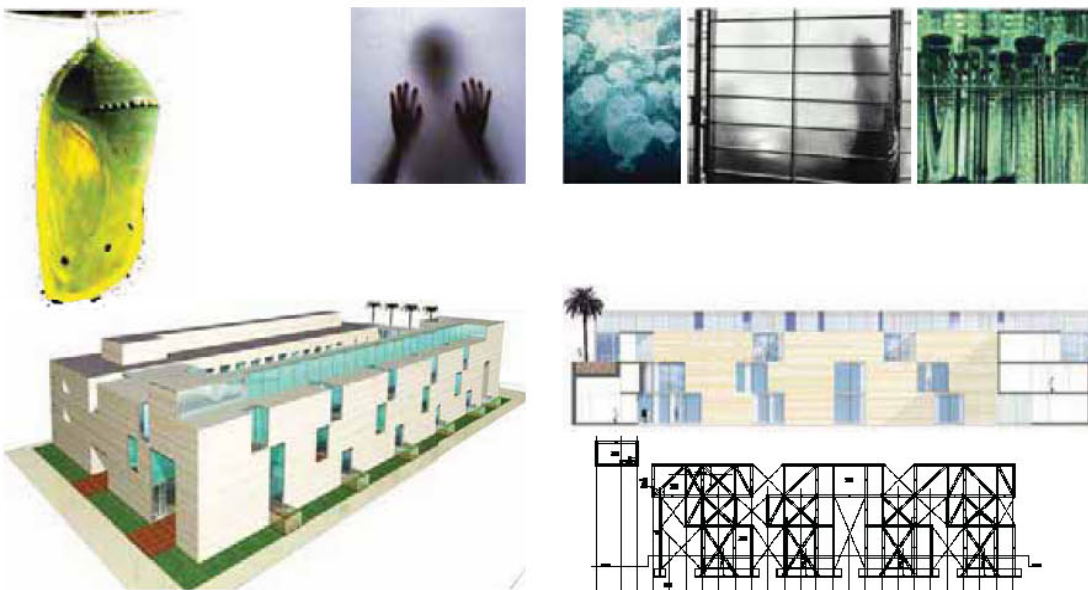


THE BACKPACK-BUILDING_British Home Award 2010

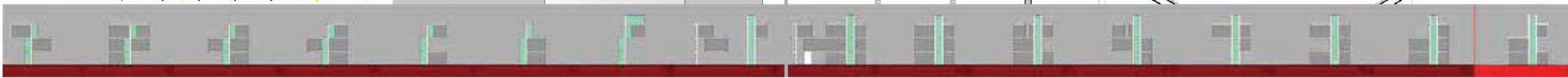
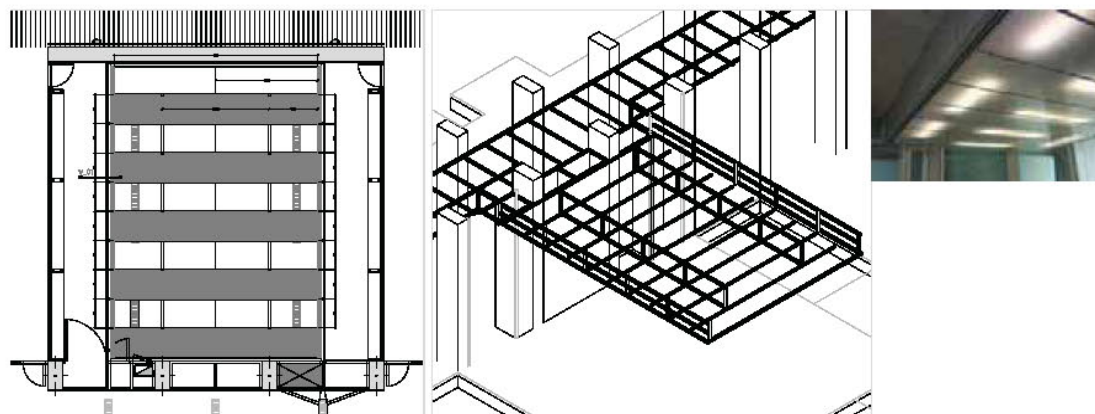
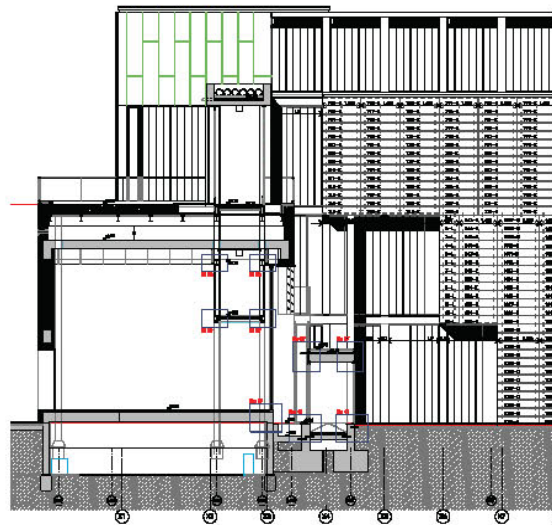


View from South-East

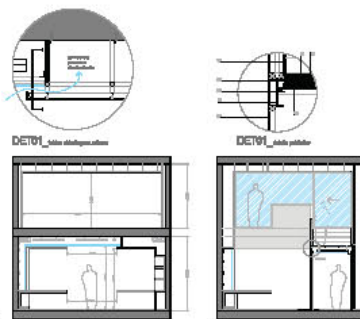
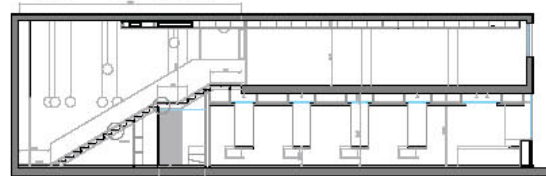
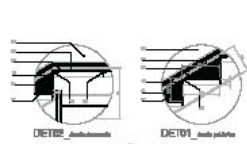
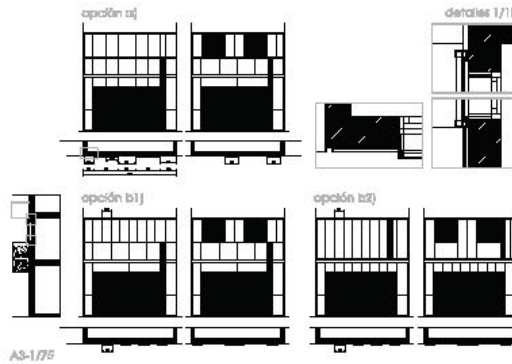
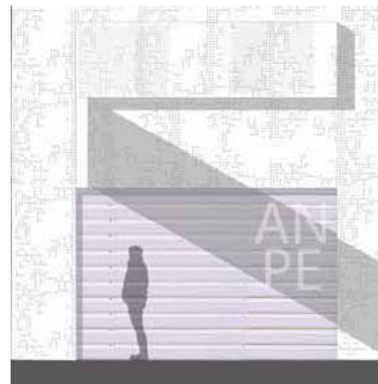
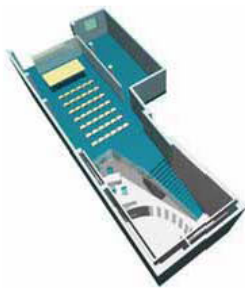
[K05-K09] >> IBMC



>> cellular & molecular biology institute (2006-2009)



[P09] >> ANPE offices



>> design + construction of offices (2009)

a new work space based on light & storage

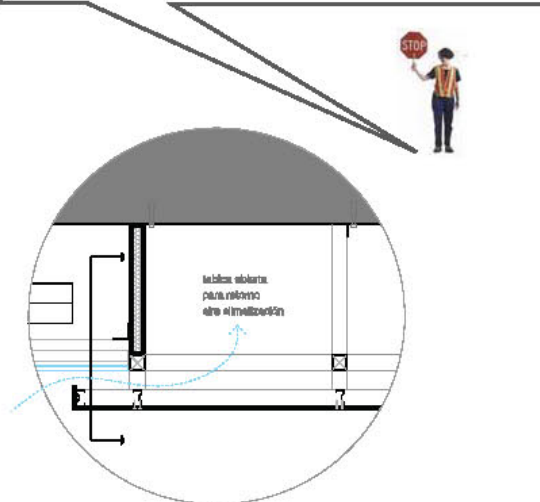
When we got this commission, the first thing we did was to rethink from the scratch what a working space is today, and what it implies.

After this process of cleaning prejudices, we adapted our ideas to the specific spatial conditions of the site: a long and more on the narrow side space, progressively darkening while going inside.

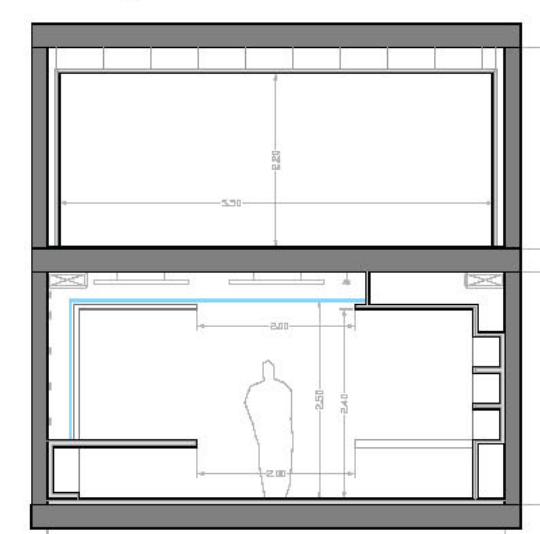
So we took the decision that light would be the main concept on which the project should be based: an illuminated ceiling acting like an artificial sky, as if you were working on an outdoors desk the whole day.

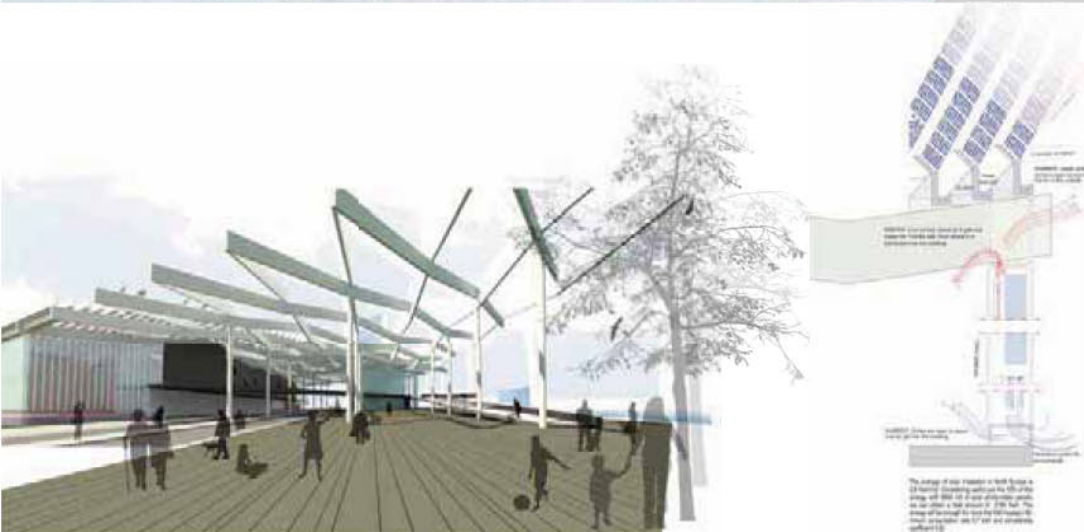
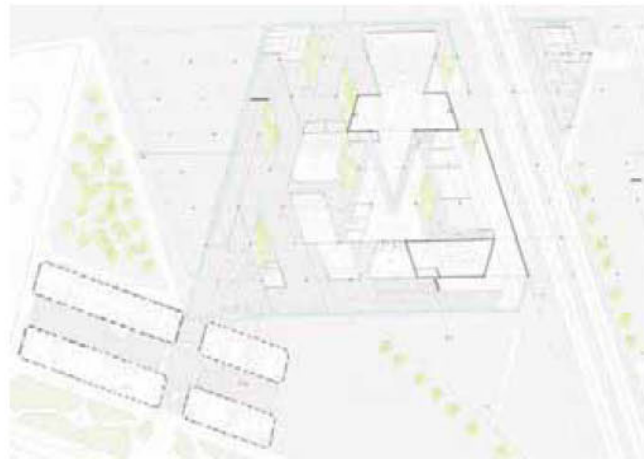
With this we try to create the best conditions for all the office workers who are spending 8+ hours everyday in front of their computers, by means of a continuous back-lit polycarbonate system.

Storage is the co-protagonist in this project, and one the main needs-requests of users from the beginning of the process: all the walls are "unusually" thick, hiding a generous storage chamber which provides every user with an individual cupboard carved in the wall. Also all the computers, plugs, sockets and power points are conveniently integrated under each desk, trying to keep a certain order in the usual chaos of an office.



DET01_ tablas abiertas para retorno

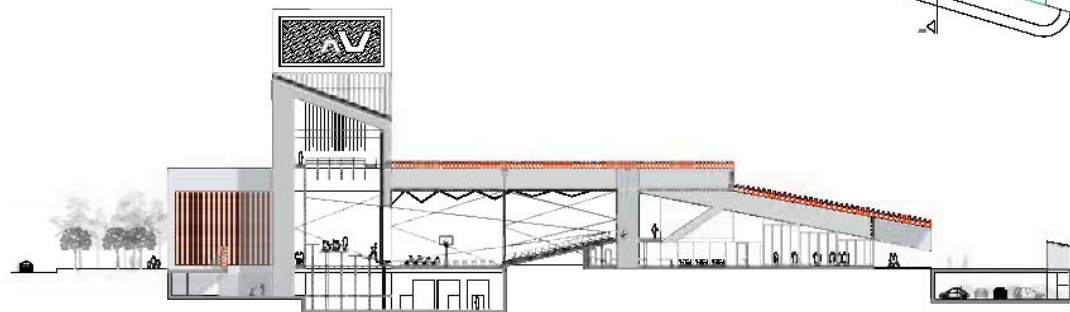
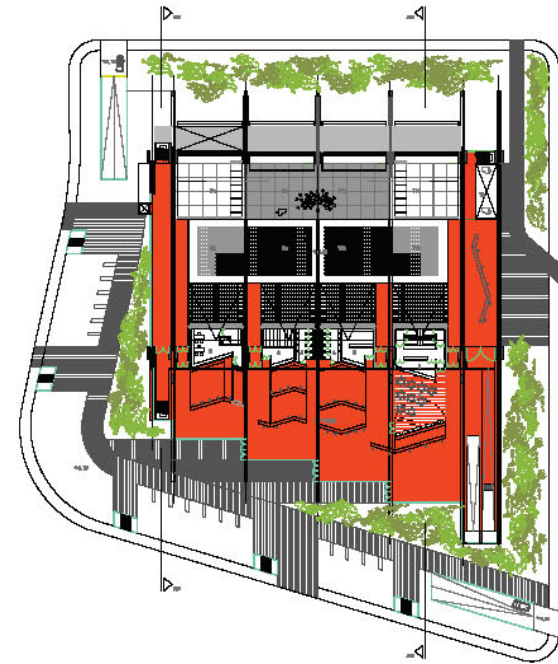


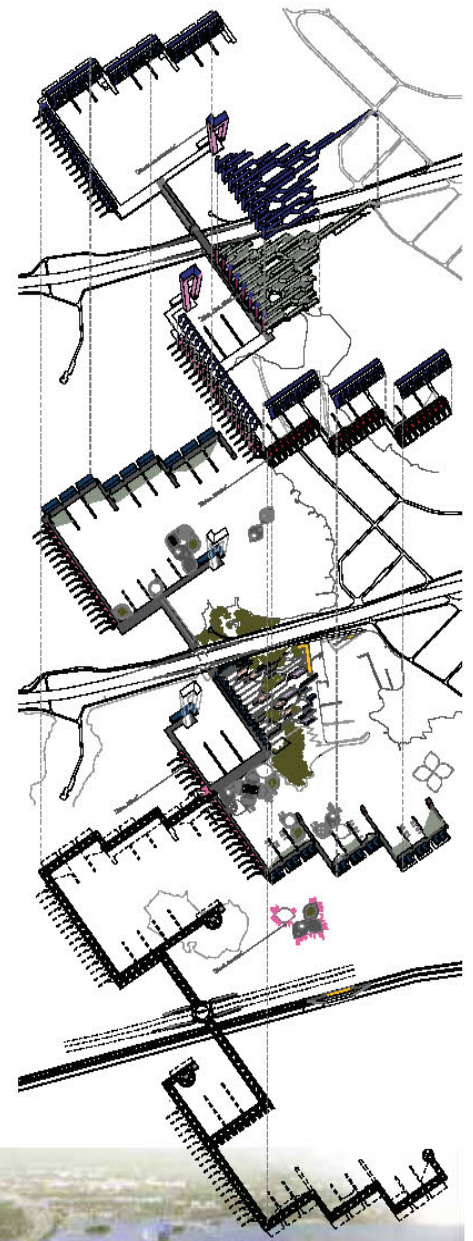
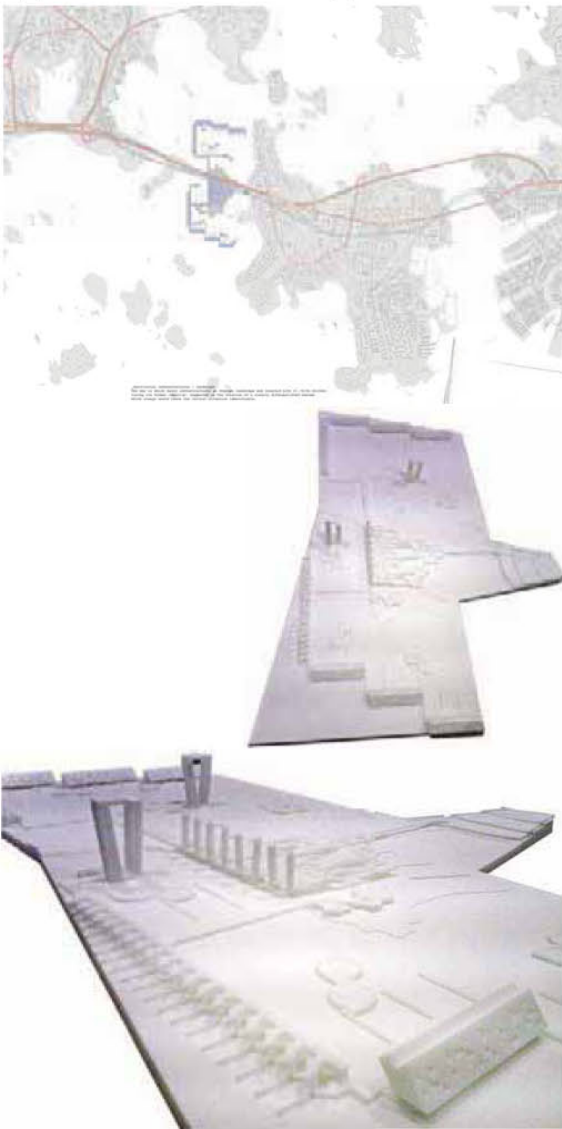


<< A new Theatre and Arts Center for Sundsvall (Sweden)
- Competition
- May 2008



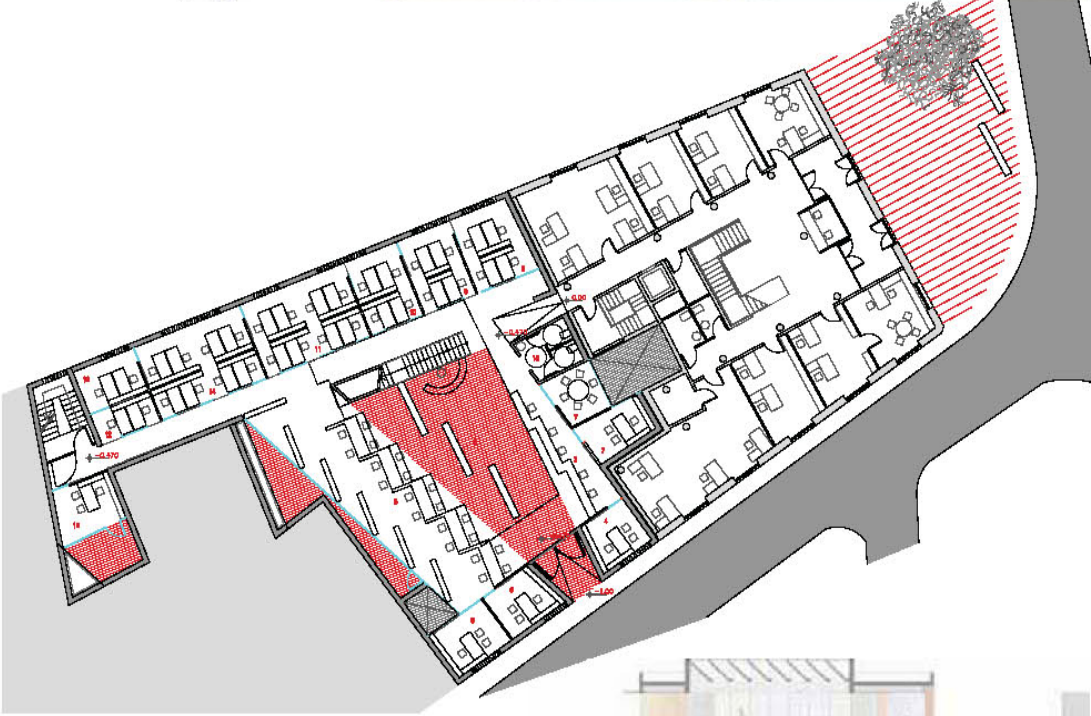
>> Exhibition and Congress Center 'Vegas Altas' in Villanueva de la Serena (Spain)
- Competition
- July 2008





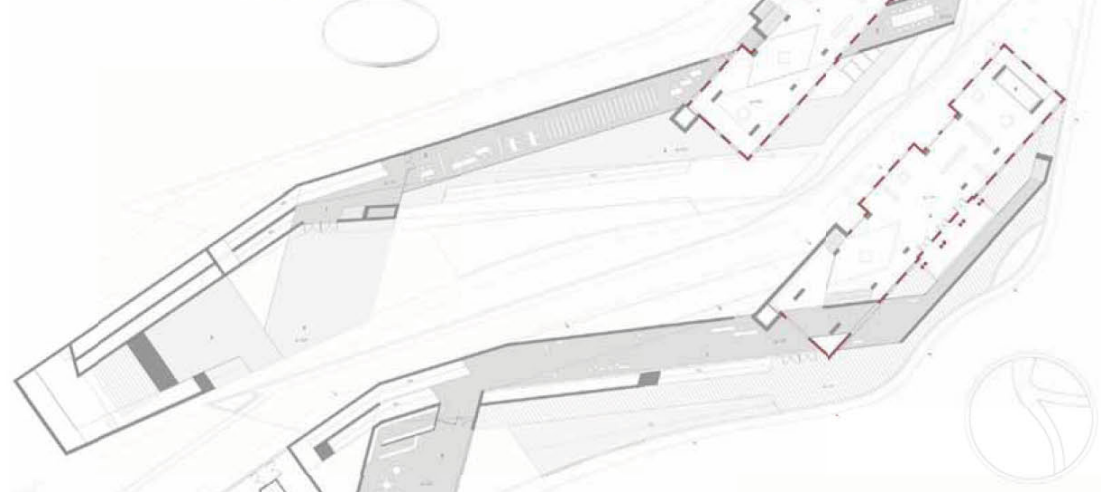
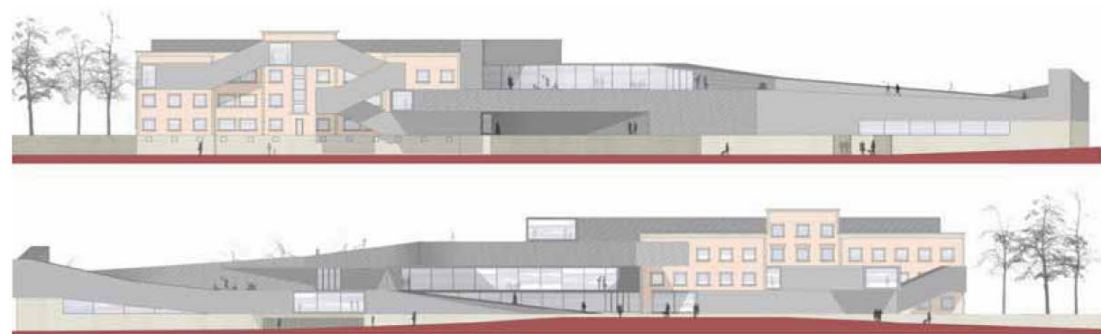
>> Extension of Administrative Office building for the Treasury Department in Almería (Spain)
- Competition
- January 2009

<< New Masterplan for Koivusaari Island (Finland)
- Competition
- November 2008



<< Subsidized Dwellings for Elderly People + Daytime Center in Palma de Mallorca (Spain)
 - Competition
 - June 2009

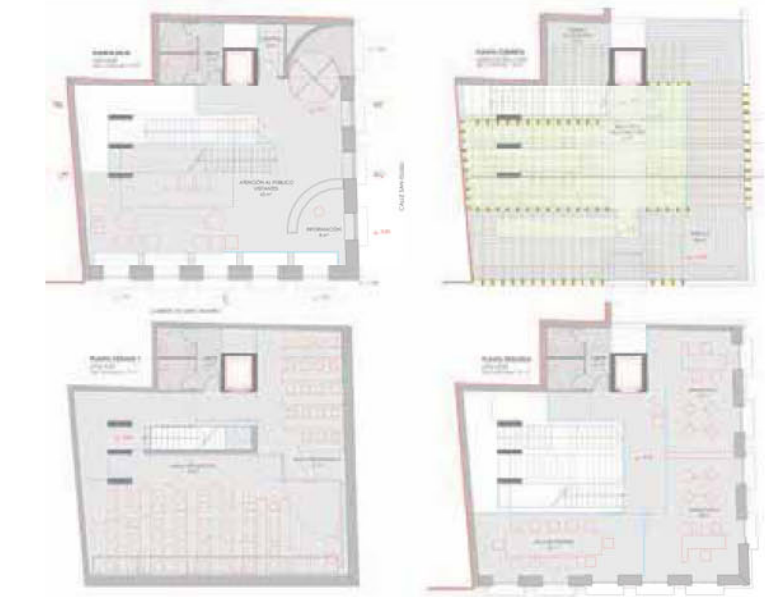
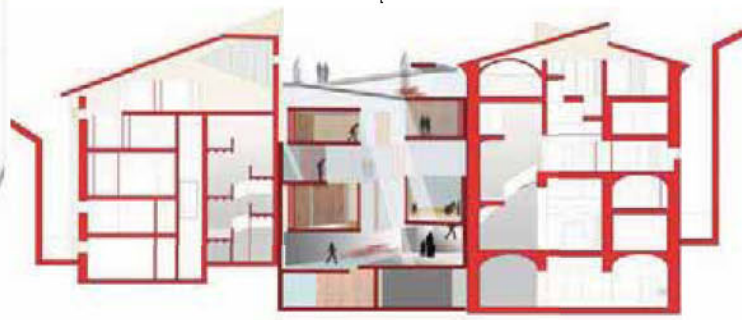
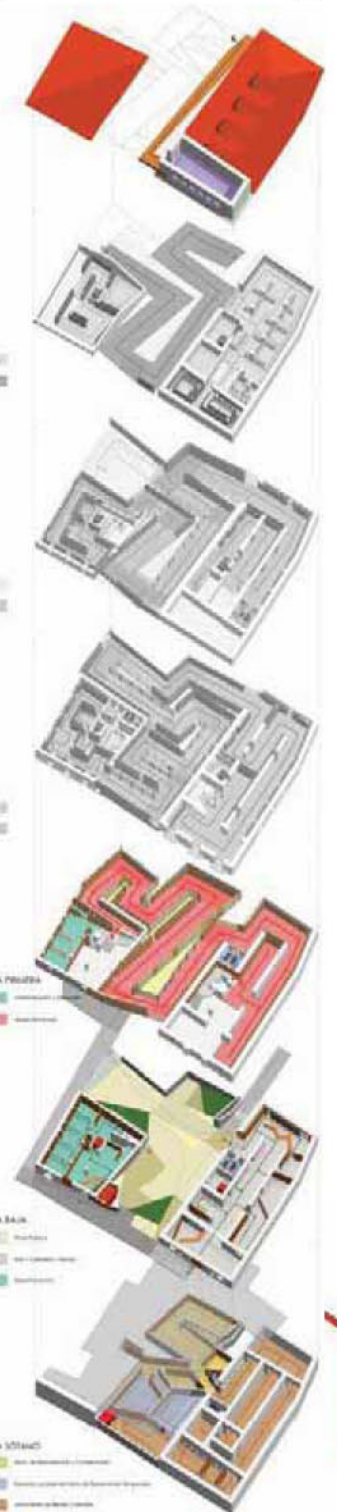
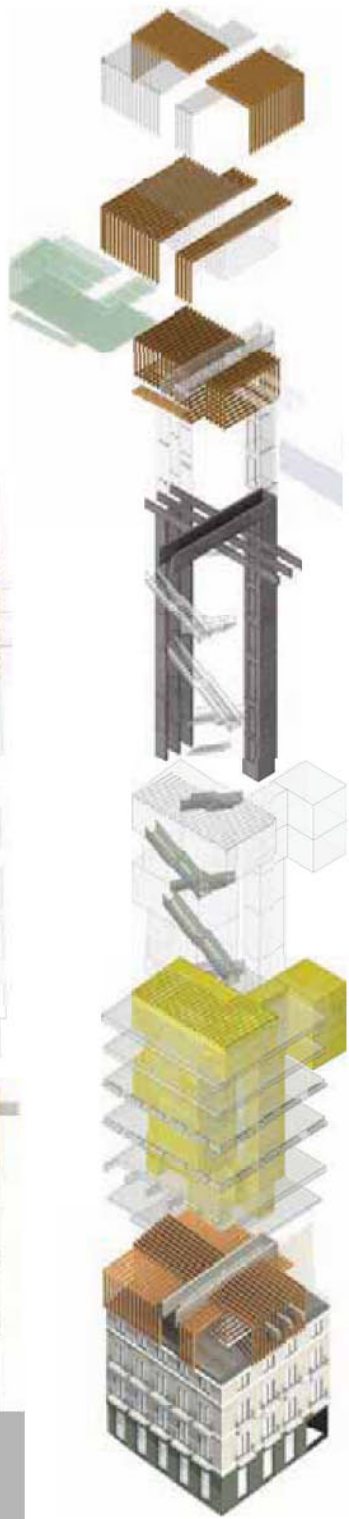
>> Interdisciplinary Exhibition Space "La Baskonia" in Basauri (Spain)
 - Competition
 - September 2009





>> Renovation of Head Offices for the Economists Association of Alicante (Spain)
 - Competition
 - March 2008

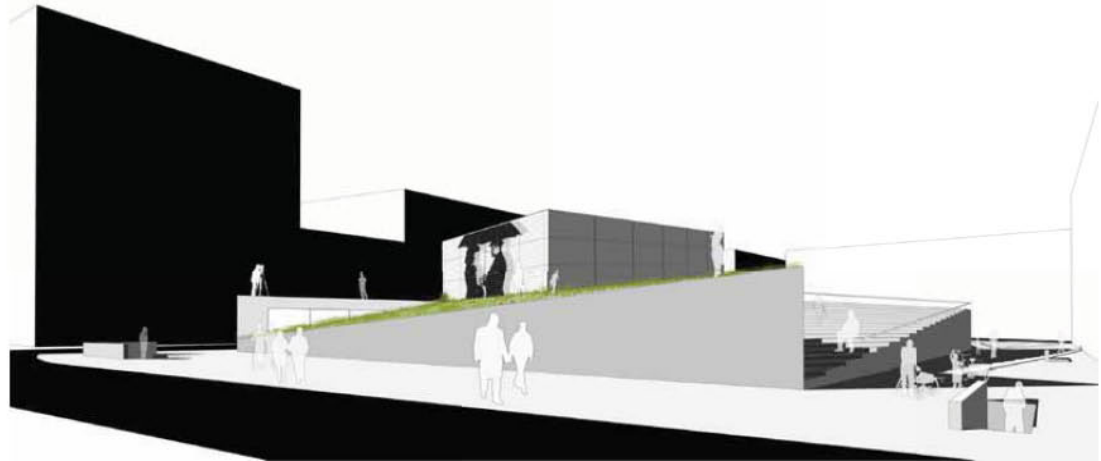
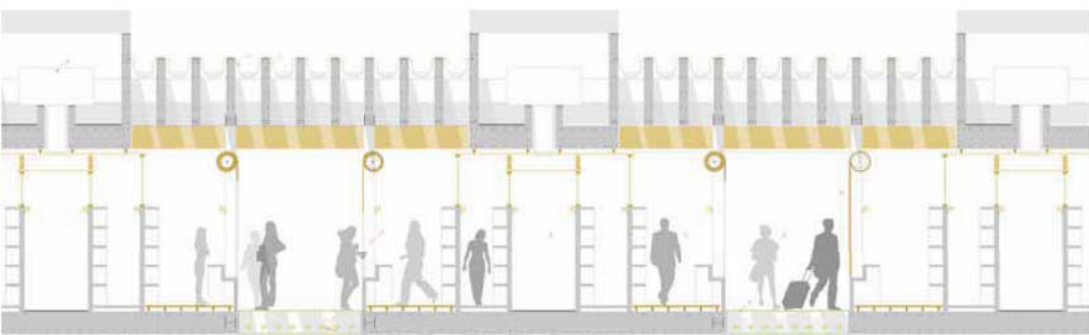
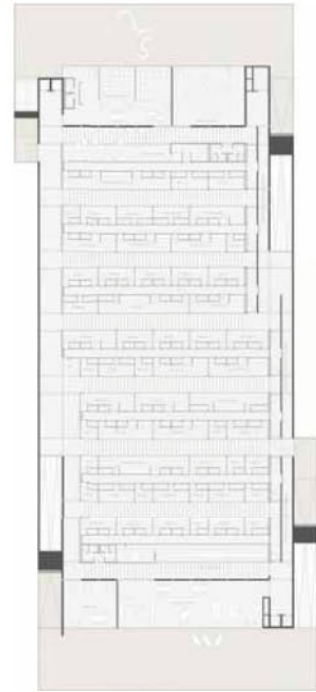
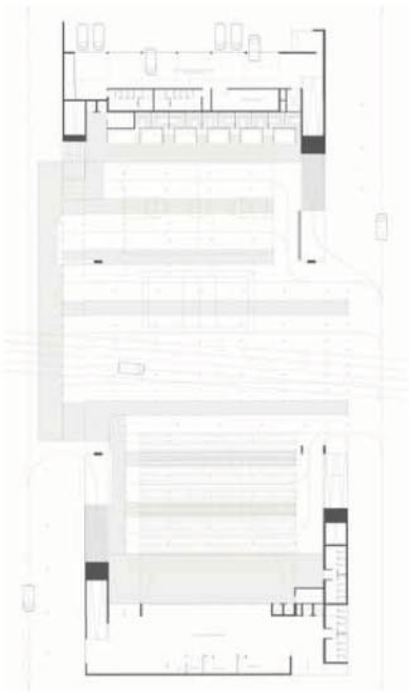
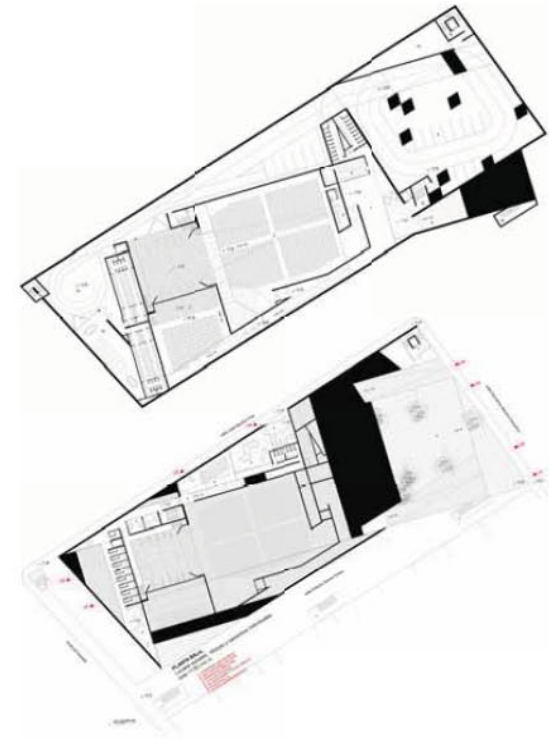
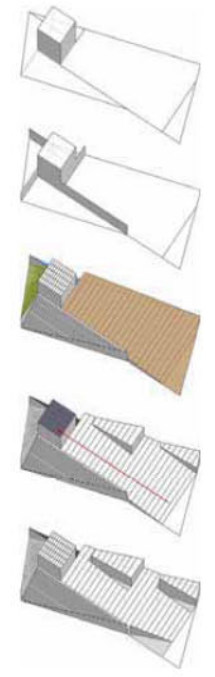
<< Extension of the Provincial Museum in the Palace-House of Marquis of Toscos in Teruel (Spain)
 - Competition
 - December 2006





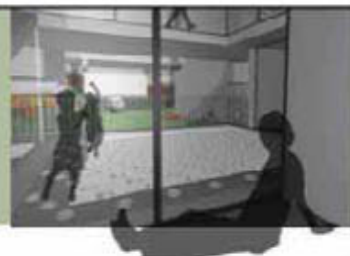
>> Ideas for the new Auditorium "Ciutat d'Elx" in Elche (Spain)
 - Competition
 - December 2008

<< Ideas for the remodeling of Public Square and the Pere Garau Market, in Palma de Mallorca (Spain)
 - Competition
 - November 2009



housIN/OUT ^{2/4}

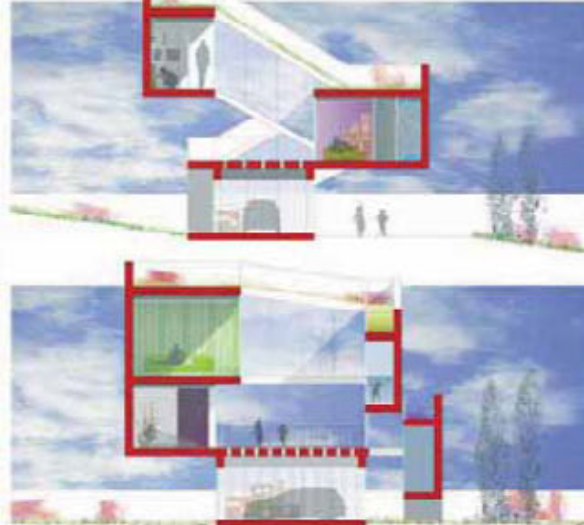
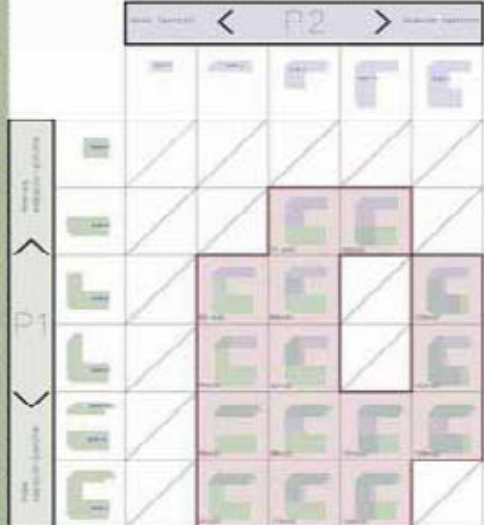
Queremos que vivas haciendo algo más que habitar en un marco urbano, que sea una diferencia entre el ámbito privado y el público. Esta diferenciación genera comportamientos y actitudes contrastadas entre el individuo como persona y el personaje social que desarrollamos.
 La no transparencia entre ambos resulta la base de esta dualidad y genera diferencias notables en la manera en la que se interactúa con el medio.
 Vivir haciendo algo más implica siempre la presencia de lugares de interacción entre el interior y el exterior. Son estos lugares (patios, porches, balcones, ...) los que, desde su condición híbrida interior-externa, organizan la relación con el medio natural, artificial y humano circundante.
 Es en estos espacios donde se produce la transformación de la persona en un personaje público.



CRUJIAS BASE, GENERADORES DE BRAZOS HABITABLES



MATRIZ GENERADORA DE TIPOLOGÍAS, COMBINACIÓN BRAZOS/PLANTAS



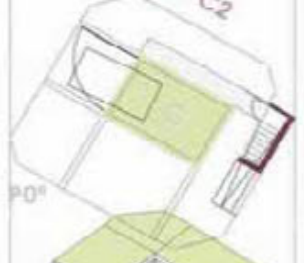
REVERSIBILIDAD DE PROGRAMAS EN PLANTAS/BRAZOS + PROGRAMAS ESPECIALES



TIPOLOGÍAS ÓPTIMAS DESARROLLADAS

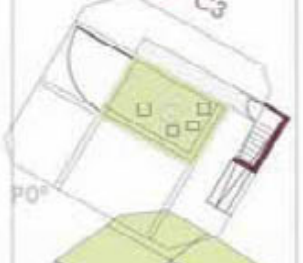
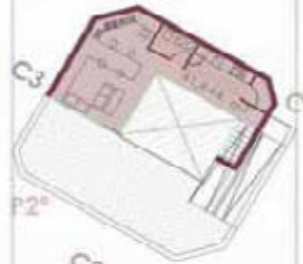
TIPO 70 m2_2 Dormitorios

Superficie en P2... 35m2
 Superficie en P1... 35m2
 Superficie Puntos... 5m2
 Superficie Cubierta... 30m2
 Superficie Paredes Exteriores... 19m2



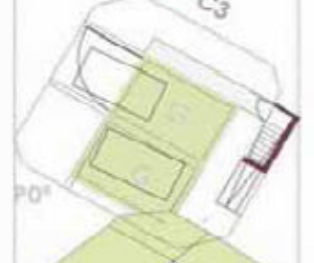
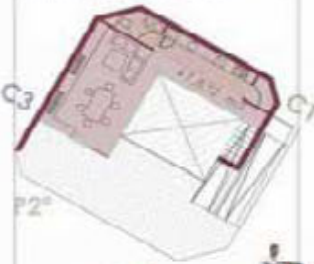
TIPO 90 m2_3 Dormitorios

Superficie en P2... 45m2
 Superficie en P1... 45m2
 Superficie Puntos... 6m2
 Superficie Cubierta... 35m2
 Superficie Paredes Exteriores... 19m2



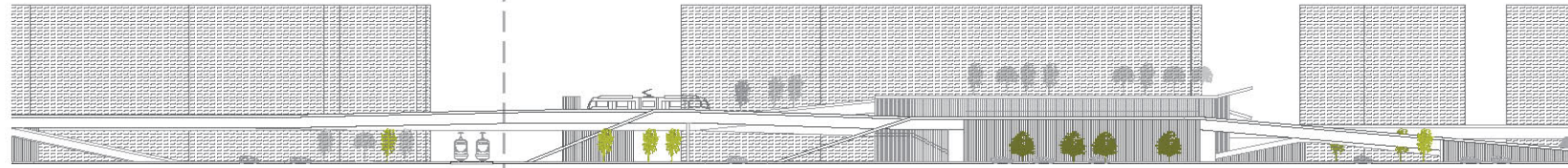
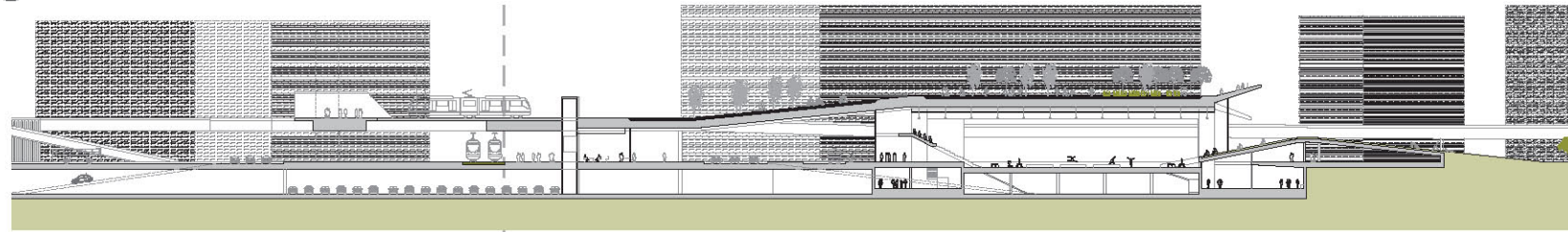
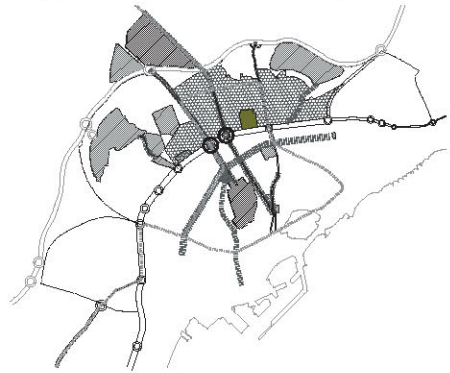
TIPO 120 m2_4 Dormitorios

Superficie en P2... 55m2
 Superficie en P1... 55m2
 Superficie Puntos... 7m2
 Superficie Cubierta... 40m2
 Superficie Paredes Exteriores... 19m2

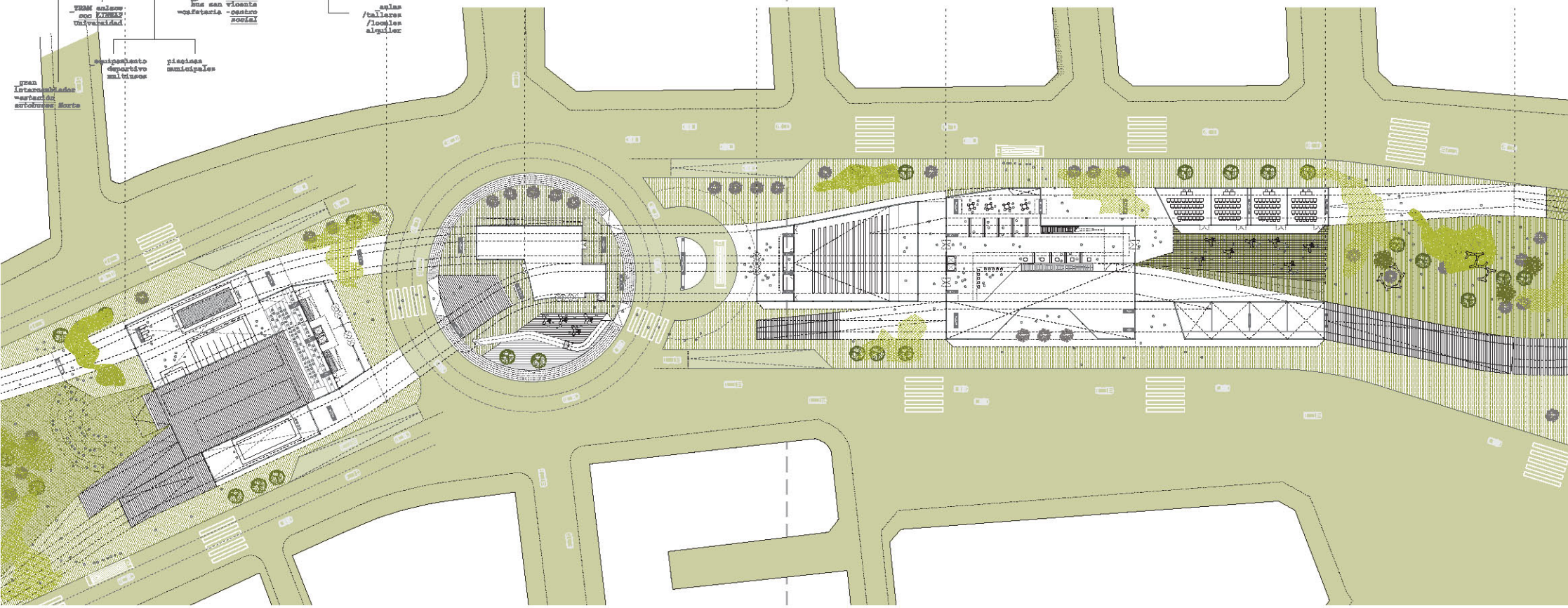
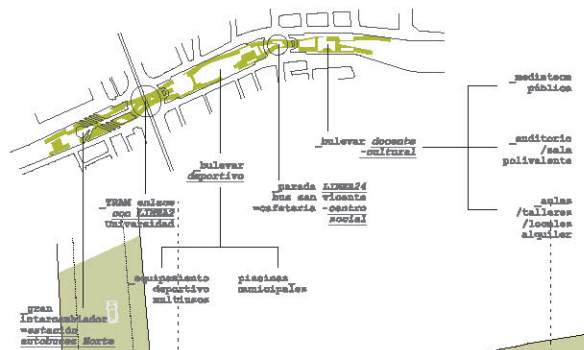


CONCURSO DE VIVIENDA PROTEGIDA DE VANGUARDIA. EMPLAZAMIENTO DE CAREAL (LA CORUÑA)

[A07+A09]>> parque via II



>> PROPUESTA DE RE-EQUIPAMIENTO DEL SECTOR NORTE





_THE cITY eDITOR

_The cITY eDITOR tries to generate a system of Urban Recycling through the insertion of new infrastructures in the largest streets of the city. This new Infrastructural System follows the concept of EDITING: this system itself looks to be highly editable; but at the same time has the capacity of editing the immediate environment in which is implanted.

By means of a CATALOGUE OF BASIC COMPONENTS it grows and evolves until colonizing the street space, creating associations and ruptures inside the urban grid, adding and boosting new uses: the main aim is to RE-PROGRAM the urban fabric, fostering a more complex and committed public space: richer, more functional, more livable, and freer as well.

